

“We Do That Differently* Now”

**Because “better, faster and cheaper”...can be wrong*

Peter Coffee

VP & Head of Platform Research
salesforce.com inc.



Activity is not Accomplishment

“There is nothing so useless as doing efficiently that which should not be done at all.

Peter Drucker



Orwell's Inversion:

Confusion of Input and Output

A giant program to Conquer Cancer is begun. At the end of five years, cancer has not been conquered, but one thousand research papers have been published. In addition, one million copies of a pamphlet entitled “You and the War Against Cancer” have been distributed. Those publications will absolutely be regarded as Output rather than Input.

- John Gall, *Systemantics*



For Example

“Measuring programming progress by lines of code is like measuring aircraft building progress by weight”

– Bill Gates

“Big Data does not mean a bigger database”

– Jeremy Howard, Kaggle

Virtualizing single-tenant workloads runs N copies of a multi-tasking operating system, each using its own CPU cycles to isolate – redundantly – its single task



Re-Thinking Robotics

- **Old ‘normal’:** program robots to move from location A to location B
- Put cages around them to keep them from killing people
- **New ‘normal’:** program movements based on force exerted, not position achieved
- Train to follow approximate path – with force feedback



Re-Thinking Manufacturing

- **Old ‘normal’:** spare parts kept in inventory; machines become infeasible to maintain when spares are no longer on hand
- **New ‘normal’:** parts specifications are just data files. Make the part when you need it.

“Critically, this unprecedented design freedom enables the production of lightweight optimised components that are impossible to make with traditional techniques.”

<http://www.theengineer.co.uk/in-depth/the-big-story/the-rise-of-additive-manufacturing/1002560.article>



Re-Conceiving Pricing

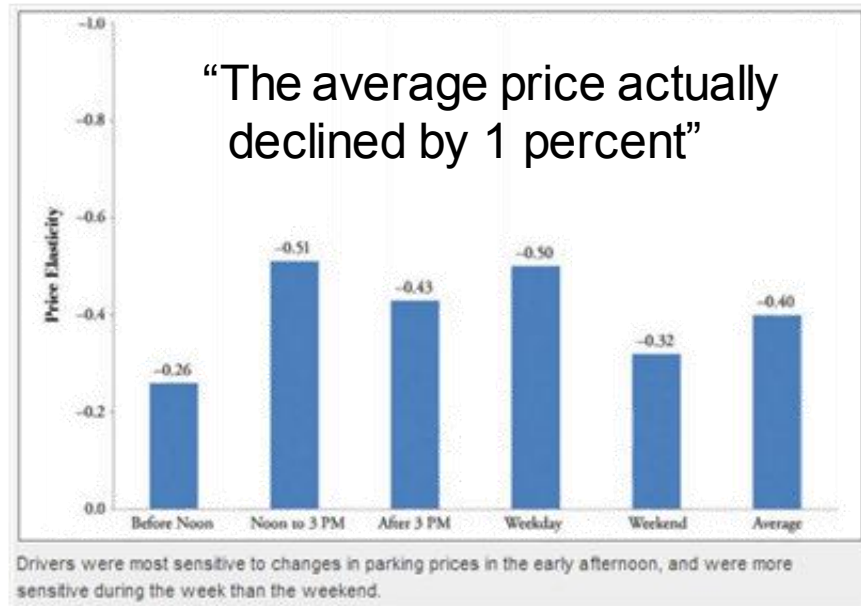
- **Old ‘normal’:** Estimate a market-clearing price; tolerate “non-price rationing” for public goods or where policy considerations require affordable access
- **New ‘normal’:** Dynamically price to level out demand, with price-sensitive but time-flexible users able to shift based on data-driven predictions and real-time notifications

Wednesday, August 7, 2013

13 Comments

Shoup: SFpark Yields Promising Results, Lessons for Demand-Based Pricing

by Aaron Blalick



Donald Shoup may be known as a [guru of smart parking policy](#), but even he has found a few surprises in the data collected so far from SFpark.

“The biggest surprise I got was that prices went up and down, but overall, they stayed the same. The average price actually declined by 1 percent,” said Shoup, professor of urban planning at UCLA and author of *The High Cost of Free Parking*, the bible of modern parking policy. “That surprised everybody. People thought it was just a way to jack up prices, but the city specifically said, ‘We are going to set prices according to this principle.’”

salesforce



Why Innovation Is Not Optional

- Incumbent leaders had three traditional protections:
 - Geography created natural local monopolies...
...but distance is now no barrier to discovery
 - Capital barriers to entry discouraged new competitors...
...but a business can now get started for nearly zero up front
 - Asymmetric communication capability set a high noise floor...
...but viral marketing and social network amplification nearly neutralize the advantage of massive media budgets
- It's really hard to be "better." **It's easier to be "different."**



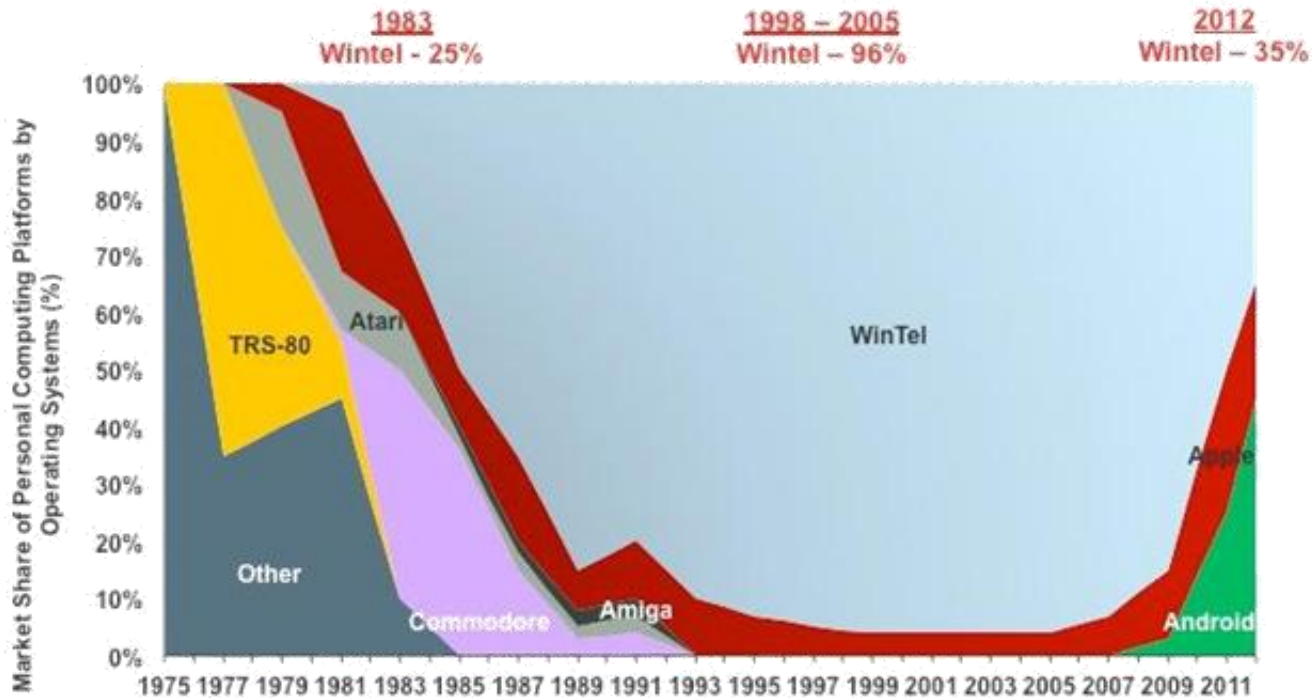
The Seven Revolutions

- Social revolution of customer and marketplace connection
- Mobile revolution of anywhere, anytime interaction
- Big Data revolution of discovery and proactive insight
- Community revolution of collaboration, inside and out
- Apps revolution of new points of entry to brands and products
- Trust revolution of new demands for transparency/confidence
- Cloud Computing revolution of services to enable the above



Multi-Device Users Demand Decoupling

Global Market Share of Personal Computing Platforms by Operating System Shipments, 1975 – 2012



KPCB

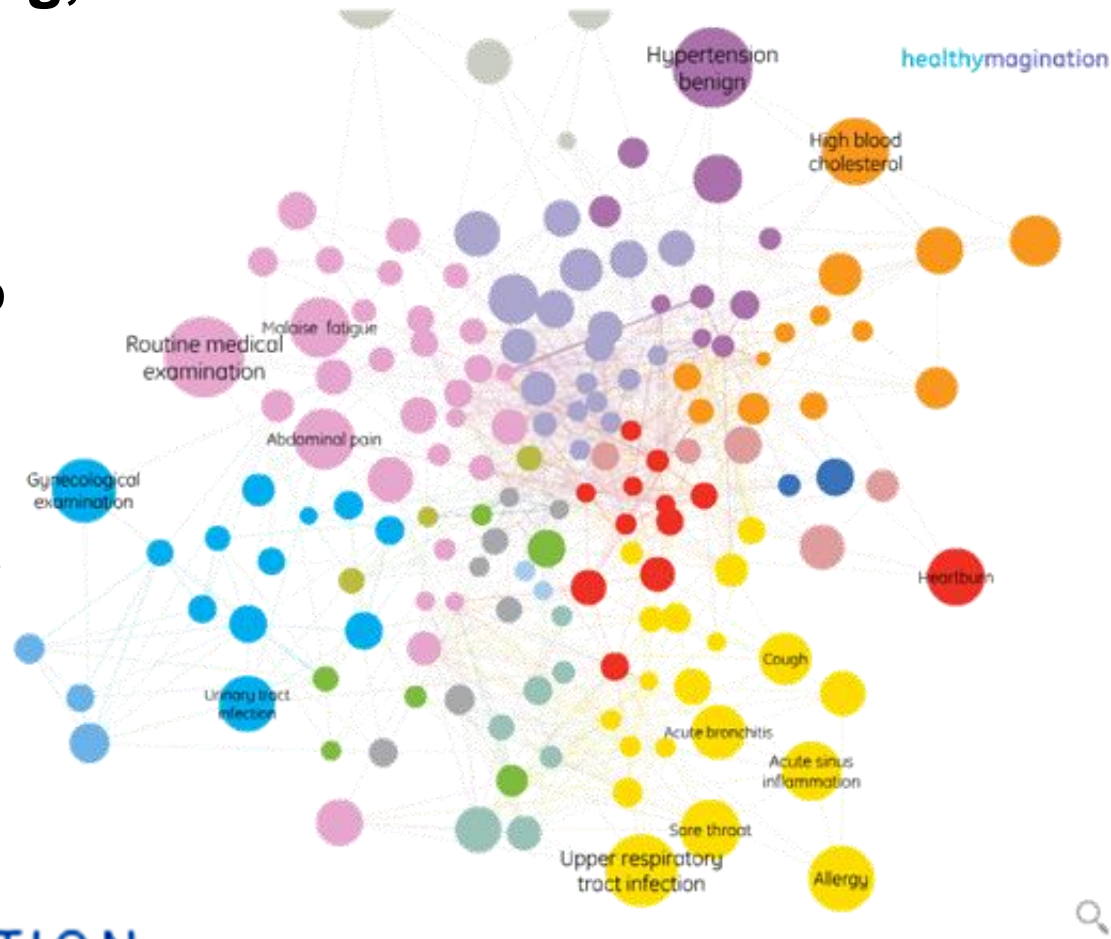
Source: Asymco.com (as of 2011), Public Filings, Morgan Stanley Research, Gartner for 2012 data. 109



Discovery, Not Query

What the World is Doing, not What the Business Did

“By combing through 7.2 million of our electronic medical records, we have created a disease network to help illustrate relationships between various conditions and how common those connections are. Take a look by condition or condition category and gender to uncover interesting associations.”



DATA VISUALIZATION

visualization.geblogs.com/visualization/network/

salesforce



This is a 'Connected' Revolution



Illumina Launches BaseSpace Cloud Platform for MiSeq October 12, 2011

“The addition of BaseSpace eliminates the need for expensive IT infrastructure, simplifying the process of adopting a personal sequencer for labs of any size and experience,” commented Illumina CEO Jay Flatley.

Bio·IT World
Next-Gen Technology • Big Data • Personalized Medicine



Like Tweet 1.8k 3,492

GE WORKS.

AGENT OF GOOD. SEE HOW GE HEALTHCARE IS DESIGNING SOFTWARE TO HELP HOSPITALS BUILD CONNECTED OPERATIONS AND REDUCE PATIENT WAIT TIMES.

PLAY VIDEO →

GE WORKS / CURING / AGILETRAC

15k

Medical devices can be tracked by GE Healthcare's AgileTrac in a single hospital.

68%

Reduction in emergency department patient wait times at a hospital with GE software.

3k

Reduction in patient discharge hours at a hospital with GE software, over 9 months.

SEE MORE STORIES

BROWSE ALL STORIES →



MOVING



CURING



POWERING



BUILDING

Brilliant Machines Are Transforming the Patient Experience

GE has wired hardware with innovative software using data to track patients and equipment. Brilliant Machines are transforming the patient experience by reducing wait times and helping hospital staff increase efficiency.



In a World of Five Billion Smart Phones

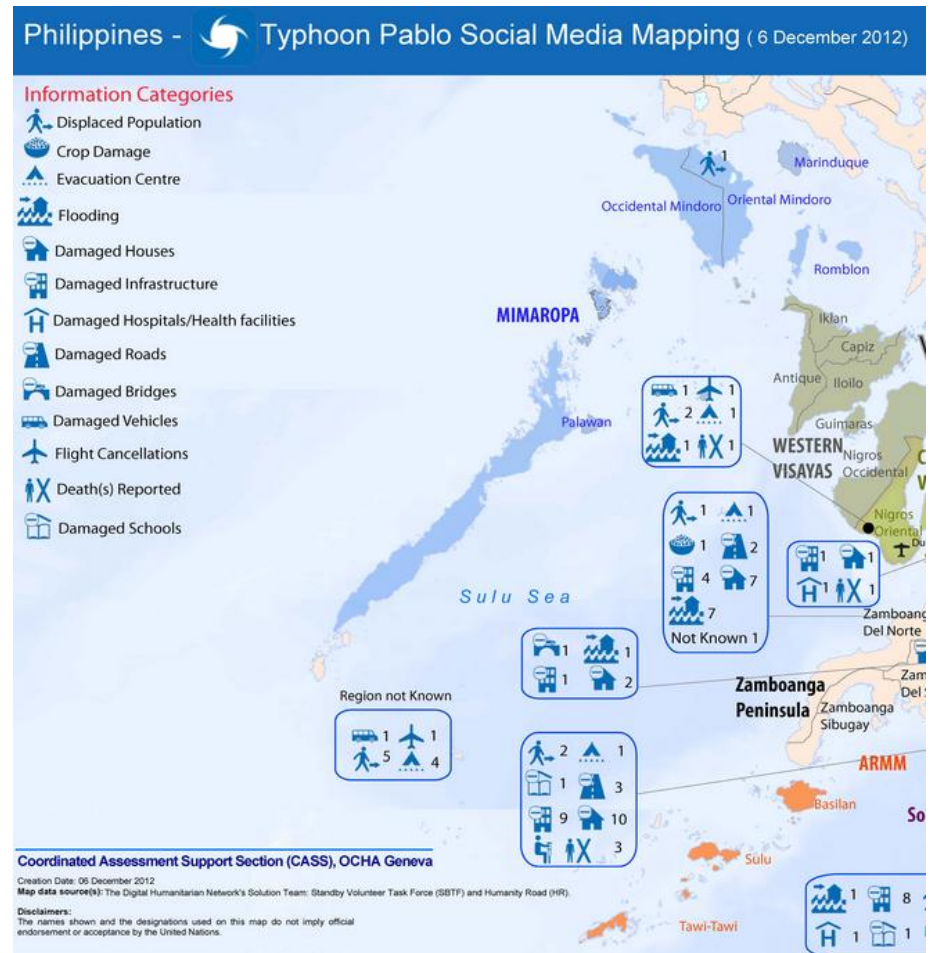
- “People making calls or sending text messages originating at the Kericho tower were making 16 times more trips away from the area than the regional average. What’s more, they were three times more likely to visit a region northeast of Lake Victoria that records from the health ministry identified as a malaria hot spot. The tower’s signal radius thus covered a significant waypoint for transmission.”
- “This is the future of epidemiology. If we are to eradicate malaria, this is how we will do it.” – Caroline Buckee



Why Build When You Can Harvest?

What do you get from

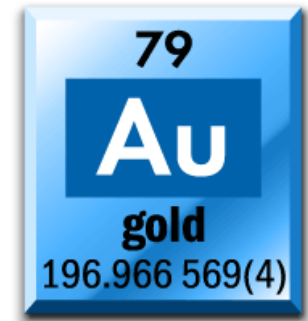
- Patterns in big data derived from
- Social networks of people & devices via
- Ubiquitous, 24×7 mobile connection?



What Role for “The Crowd”?

- Sift more dirt, find more gold
 - With modern machines/methods, gold mines are viable at 1 g. Au / ton of ore
 - Costs of collecting/sifting the crowdstream continue to fall
- The oddly opposite models:
 - Delphi Method: people with wildly varying knowledge, exposed to each other's opinions, produce consensus surpassing the sum of the parts
 - Open-Source Method: Individual contributions, appropriately incented (if only with ego rewards), yield cost-effective combined results
- Can the crowd survive its success?
 - “Even mild social influence can undermine the wisdom of crowd effect.”

Proceedings of the National Academy of Sciences, 16 May 2011
wired.com/wiredscience/2011/05/wisdom-of-crowds-decline
 - **Vital elements: diversity, independence, decentralization, aggregation**



What Role for “The Crowd”?

Google Flu Trends has continued to perform remarkably well, and researchers in many countries have confirmed that its ILI estimates are accurate. But the latest US flu season seems to have confounded its algorithms. Its estimate for the Christmas national peak of flu is almost double the CDC's...

Several researchers suggest that the problems may be due to widespread media coverage of this year's severe US flu season, including the declaration of a public-health emergency by New York state last month. The press reports may have triggered many flu-related searches by people who were not ill...

- www.nature.com/news/when-google-got-flu-wrong-1.12413



What is an “application” anyway?

- Old “applications”:
 - Data captured as by-product of business activity
 - Function driven by familiar business tasks
 - User experience an afterthought
 - Built by programmers; judged on cost and efficiency
- New “apps”:
 - Data captured through algorithms of discovery
 - Function driven by customer delight
 - User experience a top priority
 - Apps built by front-line business units; judged on ROI

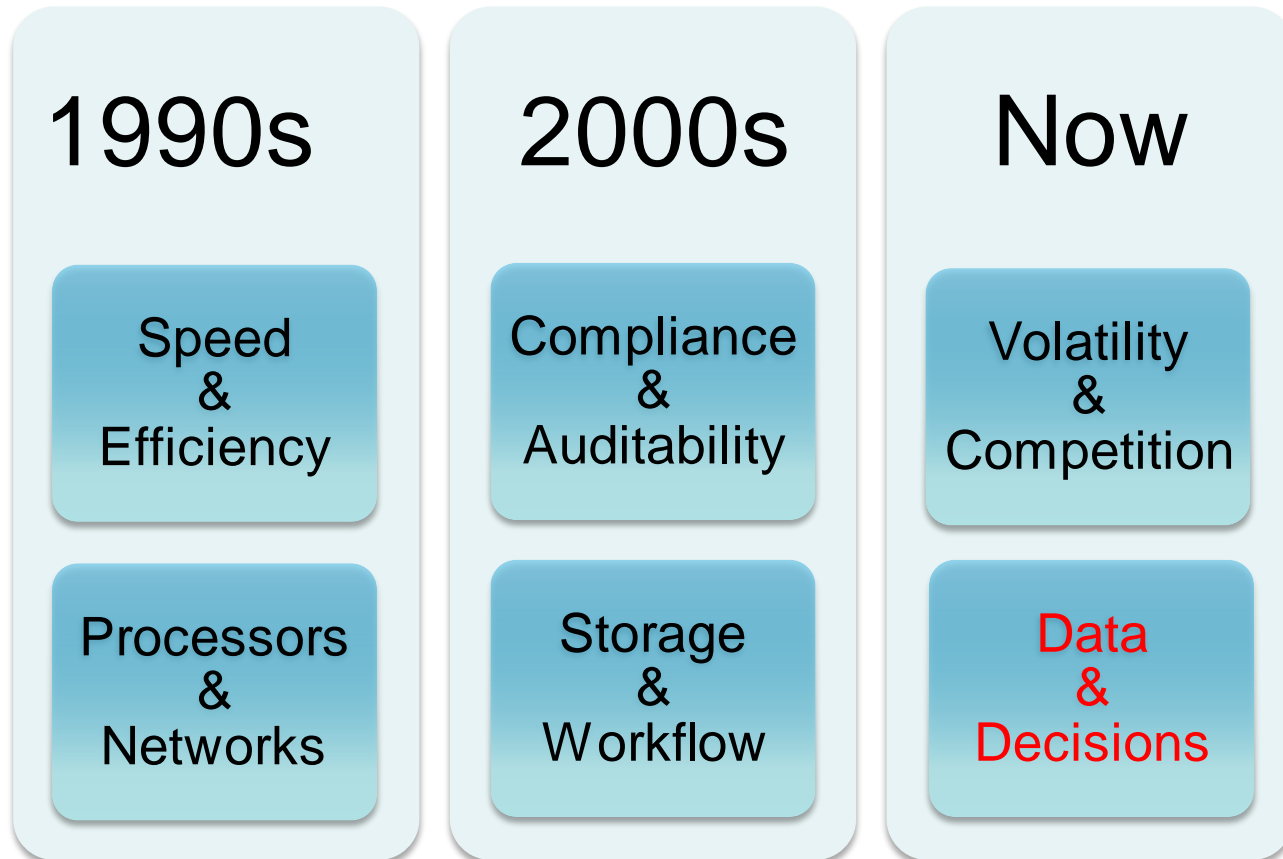


Why Own Stuff When You Only Want Outcome?

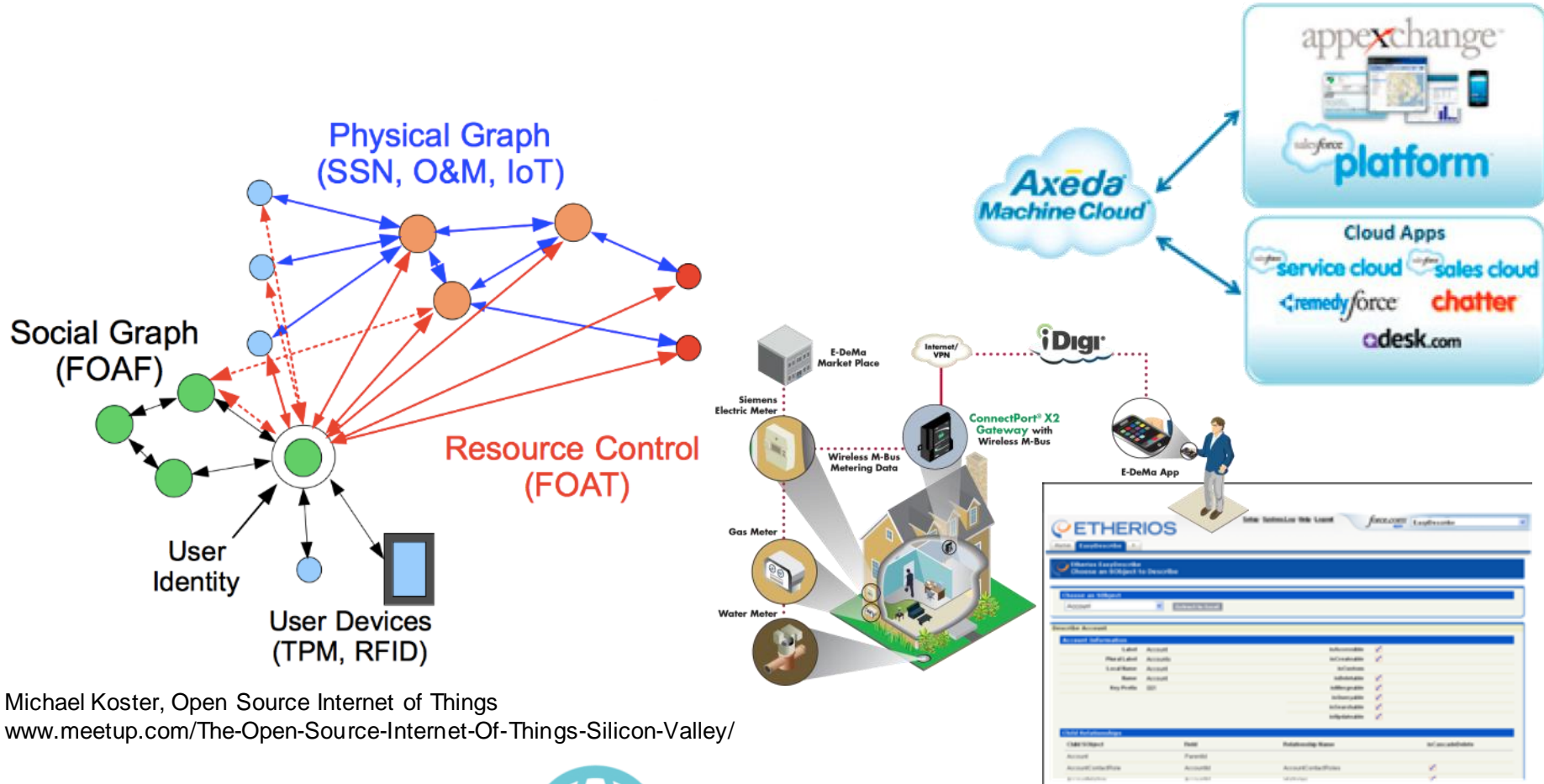
- We own things when we want **assurance of access**, without waiting for someone else to finish. Connected devices address this need.
- We own things when we want **authority to alter or improve**, without needing permission to change them as we prefer. Configurability increasingly an option.
- We own things when we want **dedication to our desires or demands**. Dynamic pricing, 3D printing address these needs without ownership burdens.



“What Matters Most”...is a Moving Target



Connecting at Scale: Victory via Abstraction



Michael Koster, Open Source Internet of Things
www.meetup.com/The-Open-Source-Internet-Of-Things-Silicon-Valley/



The Internet
of Things
Consortium

APIs evolve; ecosystems emerge



Trust: Without Which Nothing Else Matters

NSA to cut system administrators by 90 percent to limit data access



By Jonathan Allen
Thu Aug 8, 2013 8:58pm EDT

(Reuters) - The National Security Agency, hit by disclosures of classified data by former contractor Edward Snowden, said Thursday it intends to eliminate about 90 percent of its system administrators to reduce the number of people with access to secret information.

 Tweet 306

 Share 45

 Share this

 +1 155

 Email

 Print

Related News

[Putin will not 'cave' to Obama pressure: Snowden's father](#)
Wed, Aug 7 2013

[Obama cancels meeting with Russia's Putin over Snowden decision](#)
Wed, Aug 7 2013

[Manning's WikiLeaks breach triggered costly U.S. Army scramble: witness](#)

If you think people are touchy about their money, wait 'til you know where they were parked and who else was in the car with what kind of music playing on the radio.

It's essential to reduce complexity and to narrow the scope of privileges – rather than compounding complexity and enabling more superusers.



All Assets Secured, All the Time

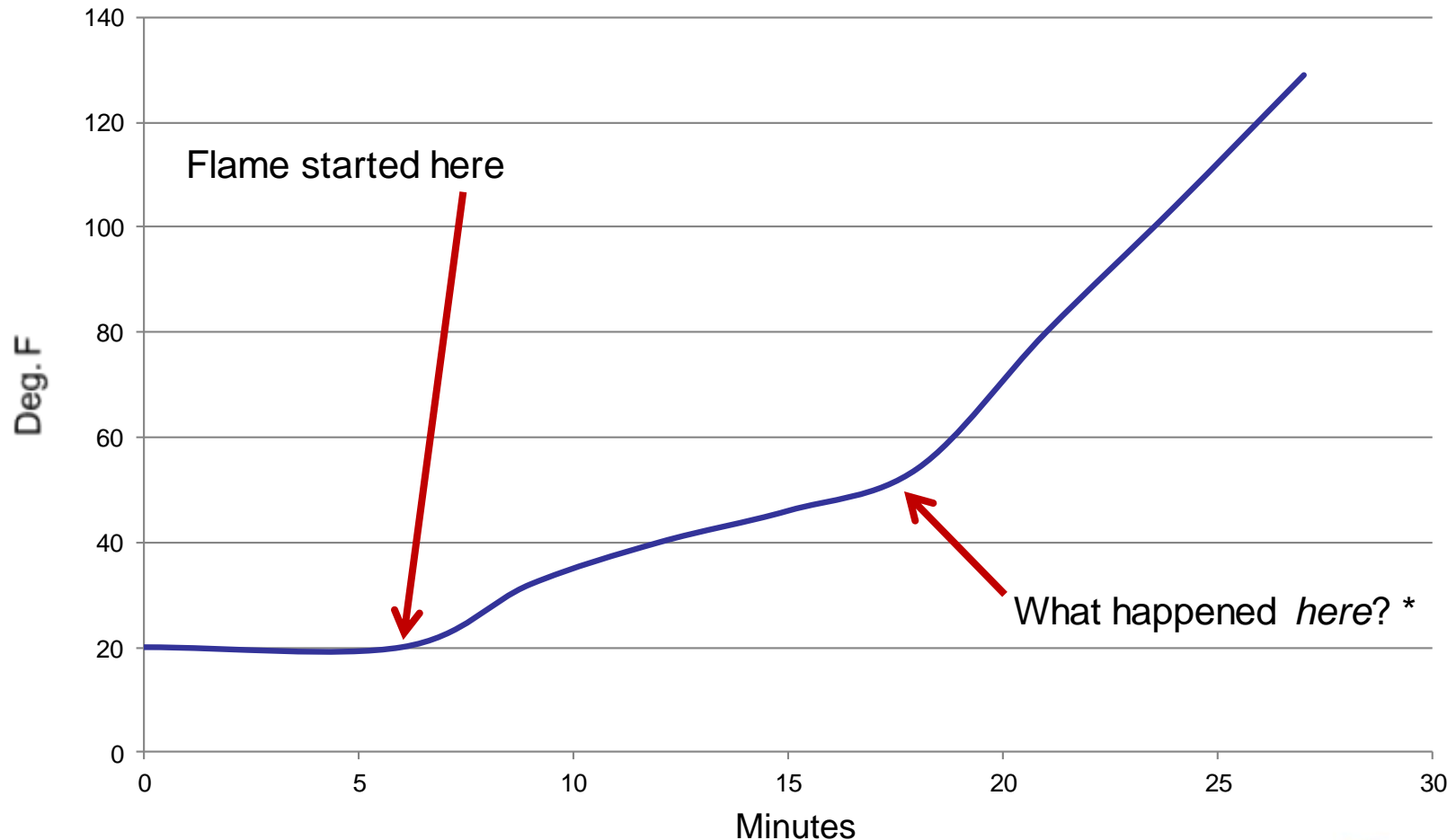
“I’ve been looking for it, but I can't find any real evidence that the cloud is more risky than hosting everything completely internal,” said Wade Baker, managing principal of Verizon's RISK group, which investigates breaches. Verizon owns cloud provider Terremark. “I’ve studied a lot of breaches; we get a lot of information from a lot of different organizations, and it doesn’t seem to be there.”

Most hacking attacks against corporations are still aimed at internal computer systems, he said. Eighty percent of the breaches Verizon investigated in 2012 involved internally hosted data. The remainder involved externally hosted data -- but those breaches began inside companies’ networks and spread to the third-party hosting services, not the other way around, Baker said.

- www.bloomberg.com/news/2013-03-26/security-fears-give-way-to-economics-as-cloud-computing-grows.html



Sometimes, It's Not About How Hard You Try



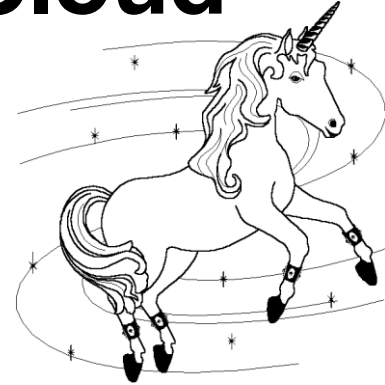
* In a pot of water mixed with ice, this is where the last ice melted



The Last Bits of Ice in the Cloud

They'd Rather Ride a Unicorn

- You'll be told that CIOs “prefer a private cloud”
- If it's not really a choice, a **'preference' is a fantasy**
 - The cloud is connection, not isolation
 - The cloud is agility, not stagnation



They're Used to Feeding Their Minotaur

- Social, mobile and open IT are competitive mandates
- The skills required to do it are scarce
- **Talent mustn't be wasted** supporting non-differentiating IT

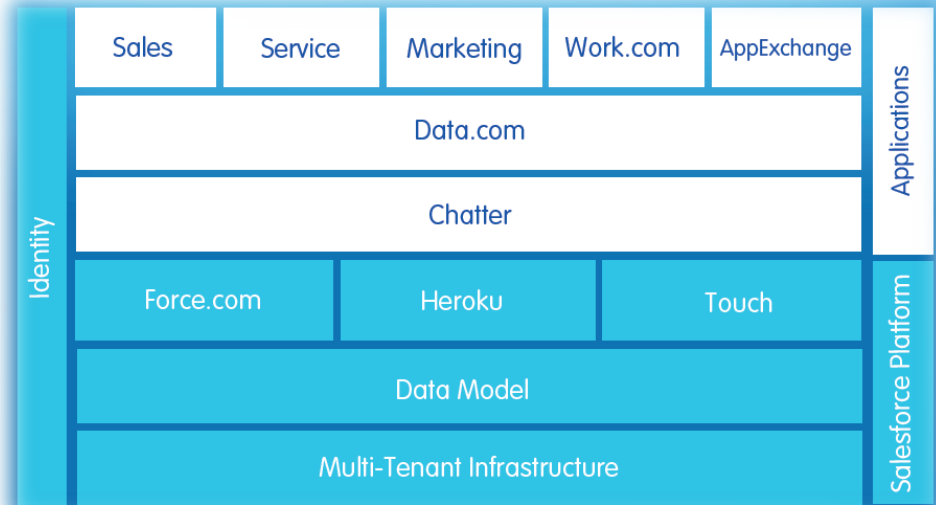


They Don't Realize They're Antisocial

- Social tools aren't merely recreational
- **Events** should call for attention
- **Content** should accompany conversations
- Workplace tools shouldn't constrain contributions



Thank You



@petercoffee



linkedin.com/in/petercoffee



facebook.com/peter.coffee



pcoffee@salesforce.com